

Scambiatori di calore a piastre

Plate heat exchangers



total transfer technology



Partner of the Funke Group





scambiatori di calore a piastre
plate heat exchangers

indice/contents

SCAMBIATORI DI CALORE A PIASTRE ISPEZIONABILI GASKETED PLATE HEAT EXCHANGERS

Attacco filettato / Threaded fitting DN 32 / DN 40 / DN 50	06
FP043 / FP081 / FP14 / FP20 / FP10 / FP16 / FP22	
Attacco flangiato / Flanged fitting DN 100	07
FP205 / FP31 / FP40 / FP50 / FP71	
Attacco flangiato / Flanged fitting DN 150	08
FP41 / FP60 / FP80 / FP42 / FP62 / FP82 / FP112	
Attacco flangiato / Flanged fitting DN 200	10
FP405 / FP70 / FP100 / FP130	
Attacco flangiato / Flanged fitting DN 300	11
FP81 / FP120 / FP160 / FP190	
Attacco flangiato / Flanged fitting DN 500	12
FP150 / FP200 / FP250 / FP300	

SCAMBIATORI DI CALORE A PIASTRE SALDO-BRASATE BRAZED PLATE HEAT EXCHANGERS

GPLT4 / GPLT5 / GPLT7 / GPLT8	14
-------------------------------	----



total transfer technology


ACCESSORI E OPTIONALS

Coibentazione realizzata il elastomero espanso a cellula chiusa anti-condensa il tutto contenuto in un box ispezionabile in lamiera di alluminio.

Vaschetta raccolta gocce dotato di connessione per scarico.

Piedi di ancoraggio a terra.
Verniciature particolari.

ACCESSORIES AND OPTIONALS

Insulation made of closed-cell elastomeric foam preventing the formation of condensate and contained within a removable casing made of aluminium sheet.

Condensate collection tank with draining coupling.

Feet for ground anchoring.
Special paintings.

Connessioni scambiatori a piastre/Plate exchanger couplings

Connessioni/Modello Couplings/Model	CONNESSIONE FILETTATA/THREADED COUPLING			CONNESSIONE FLANGIATA/FLANGED COUPLING				
	INOX AISI 304 STAINLESS STEEL AISI 304	INOX AISI 316 STAINLESS STEEL AISI 316	NYLON NYLON	RICAVATA SUL FUSTO/GROOVE ON BODY	CON RUBBER LINER WITH RUBBER LINER	CON METAL LINER/WITH METAL LINER	CON FLANGIA LIBERA/WITH FREE FLANGE	CON FLANGIA SALDATA/WITH WELDED FLANGE
FP043/FP081	■	■	■				■	■
FP14/FP20/FP10/FP16/FP22	■	■	■				■	■
FP205/FP31/FP40/FP50/FP71				■	■	■	■	■
FP41/FP60/FP80/FP42/FP82/FP112					■	■	■	■
FP405/FP70/FP100/FP130					■	■		
FP81/FP120/FP160/FP190					■	■		
FP150/FP200/FP250/FP300					■	■		

■ Esecuzione standard / Standard version

■ Esecuzione su richiesta / Version on request

Scambiatori di calore a piastre ispezionabili

Gasketed plate heat exchangers

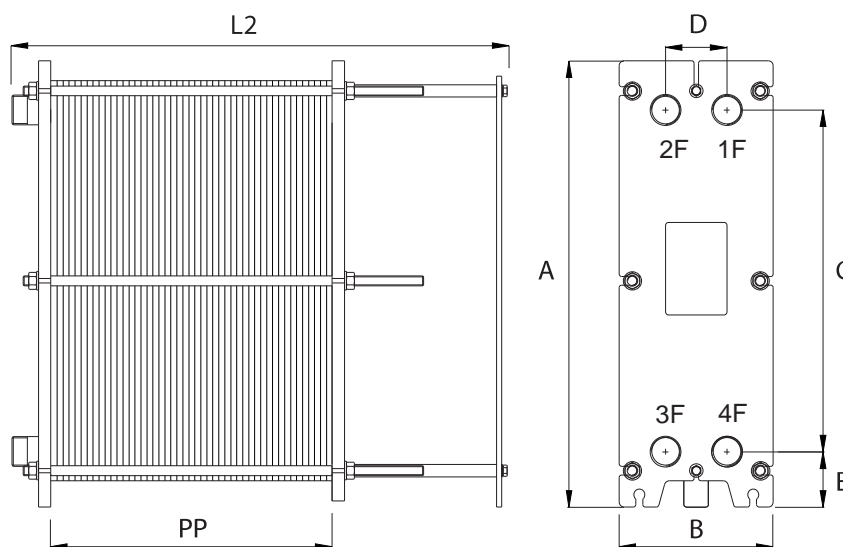
FP043/FP081/FP14/FP20/FP10/FP16/FP22

Scambiatori a piastre ispezionabili con attacco filettato DN32/DN40/DN50
Gasketed plate heat exchangers with threaded fitting DN32/DN40/DN50

Layout connessioni possibili / Layout of allowed couplings

PRIMARIO/PRIMARY		SECONDARIO/SECONDARY	
INGRESSO/IN	USCITA/OUT	INGRESSO/IN	USCITA/OUT
1F	4F	3F	2F
4F	1F	2F	3F
3F	2F	1F	4F
2F	3F	4F	1F

Con piastre offset attenersi esclusivamente al layout indicato nella scheda di calcolo.
Con circuito primario si intende quello più caldo che cede calore.
Con circuito secondario si intende quello più freddo che prende calore.
With offset plates: strictly respect the layout shown in the calculation sheet.
By primary circuit it is meant the hotter one which releases heat.
By secondary circuit it is meant the cooler one which receives heat.



Modello	Diametro Connessioni	Superficie Piastra	Pressione massima di esercizio	A	B	C	D	E	PP	Numero Piastre	L2
Model	Coupling Diameter	Plate surface area	Max working pressure	A	B	C	D	E	PP	Number of plates	L2
		m ²	bar	mm							mm
FP043	1"1/4 GAS M	0,042	16	470	200	380	68	45	NPx3,1+2	NP≤14	165
										14<NP≤38	263
										38<NP≤64	363
FP081	1"1/2 GAS M	0,085	16	725	250	555	100	90	NPx3,05+2	NP≤14	265
										14<NP≤38	385
										38<NP≤64	485
										64<NP≤90	785
FP14	2" GAS M	0.14	16	837	310	590	135	132	NPx2,4	0<NP≤150	340-1090
FP20	2" GAS M	0.20	16	1066	310	819	135	132	NPx2,4	0<NP≤150	340-1090
FP10	2" GAS M	0.10	16	735	310	494	126	128	NPx2,4	NP≤60	590
										60<NP≤150	1090
FP16	2" GAS M	0.14	16	932	310	694	126	128	NPx2,9+3	NP≤60	590
										60<NP≤150	1090
FP22		0.22	16	1132	310	894	126	128	NPx2,9+3	NP≤60	590
										60<NP≤150	1090

Scambiatori di calore a piastre ispezionabili

Gasketed plate heat exchangers

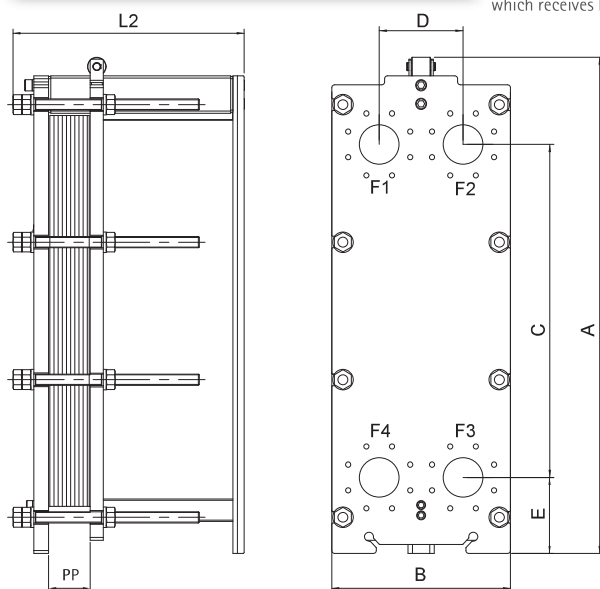
FP205/FP31/FP40/FP50/FP71

Scambiatori a piastre ispezionabili con attacco flangiato DN100 Gasketed plate heat exchangers with flanged fitting DN100

Layout connessioni possibili / Layout of allowed couplings

PRIMARIO/PRIMARY		SECONDARIO/SECONDARY	
INGRESSO/IN	USCITA/OUT	INGRESSO/IN	USCITA/OUT
F1	F4	F3	F2
F4	F1	F2	F3
F3	F2	F1	F4
F2	F3	F4	F1

Con piastre offset attenersi esclusivamente al layout indicato nella scheda di calcolo.
Con circuito primario si intende quello più caldo che cede calore. Con circuito secondario si intende quello più freddo che prende calore.
With offset plates: strictly respect the layout shown in the calculation sheet.
By primary circuit it is meant the hotter one which releases heat.
By secondary circuit it is meant the cooler one which receives heat.



* con rubber line NPx3,1+1,5
* with rubber line NPx3,1+1,5

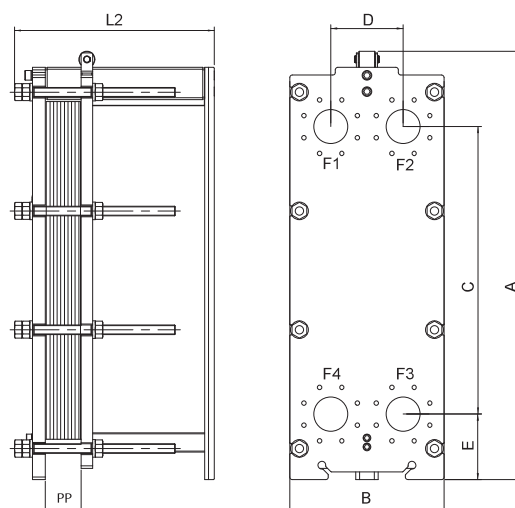
Modello	Diametro connessioni	Superficie piastra	Pressione massima di esercizio	A	B	C	D	E	PP	Numero piastre	L2
Model	Coupling diameter	Plate surface area	Max. working pressure	A	B	C	D	E	PP	Number of plates	L2
		m ²	bar				mm				mm
FP205	DN 100 UNI PN 16	0.21	16	1160	480	719	225	204	NPx3.1*	NP≤60 60<NP≤150	620 1120
FP31	DN 100 UNI PN 16	0.30	16	1332	480	894	225	204	NPx3.1*	NP≤60 60<NP≤150	620 1120
FP40	DN 100 UNI PN 16	0.40	16	1579	480	1141	225	204	NPx3.1*	NP≤60 60<NP≤150	620 1120
FP50	DN 100 UNI PN 16	0.50	16	1826	480	1388	225	204	NPx3.1*	NP≤60 60<NP≤150	620 1120
FP71	DN 100 UNI PN 16	0.70	10 - 16 - 25	2320	480	1882	225	204	NPx3.1*	NP≤60 60<NP≤150 150<NP≤250 250<NP≤350 350<NP≤500 500<NP≤600	600 1100 1600 2100 2600 3100

Scambiatori di calore a piastre ispezionabili

Gasketed plate heat exchangers

FP41/FP60/FP80

Scambiatori a piastre ispezionabili con attacco flangiato DN150
Gasketed plate heat exchangers with flanged fitting DN150

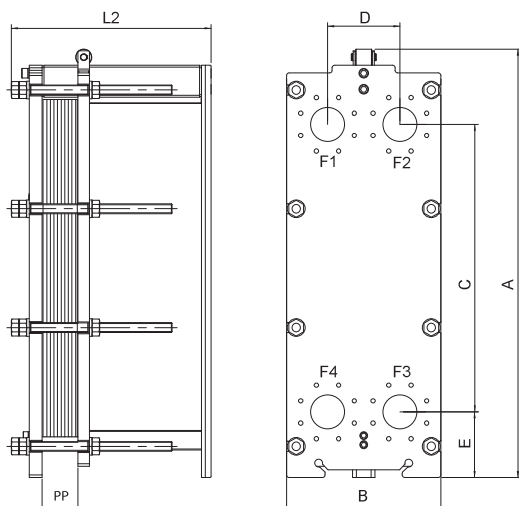


Modello	Diametro connessioni	Superficie piastra	Pressione massima di esercizio	A	B	C	D	E	PP	Numero piastre	L2
Model	Coupling diameter	Plate surface area	Max working pressure	A	B	C	D	E	PP	Number of plates	L2
		m ²	bar	mm							mm
FP41	DN 150 UNI PN 16	0,40	10 - 16 - 25	1470	620	941	290	225	NPx3,5	NP ≤ 80	860
										80 < NP ≤ 130	1110
										130 < NP ≤ 220	1610
										220 < NP ≤ 300	2110
										300 < NP ≤ 500	3110
500 < NP ≤ 700	4110										
FP60	DN 150 UNI PN 16	0,60	10 - 16 - 25	1835	620	1306	290	225	NPx3,5	NP ≤ 80	860
										80 < NP ≤ 130	1110
										130 < NP ≤ 220	1610
										220 < NP ≤ 300	2110
										300 < NP ≤ 500	3110
500 < NP ≤ 700	4110										
FP80	DN 150 UNI PN 16	0,80	10 - 16 - 25	2200	620	1671	290	225	NPx3,5	NP ≤ 80	860
										80 < NP ≤ 130	1110
										130 < NP ≤ 220	1610
										220 < NP ≤ 300	2110
										300 < NP ≤ 500	3110
500 < NP ≤ 700	4110										

Scambiatori di calore a piastre ispezionabili

Gasketed plate heat exchangers

FP42/FP62/FP82/FP112



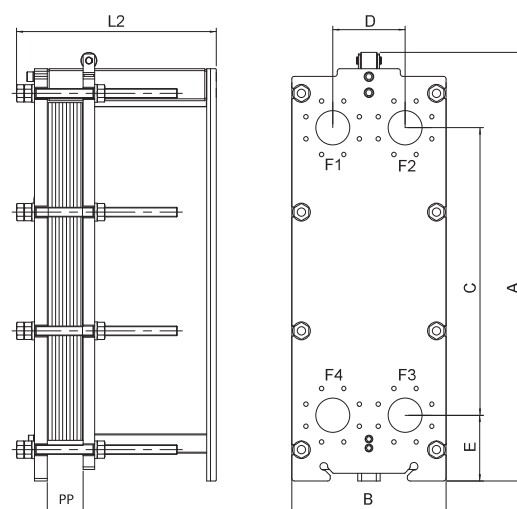
Modello	Diametro connessioni	Superficie piastra	Pressione massima di esercizio	A	B	C	D	E	PP	Numero Piastre	L2
Model	Coupling diameter	Plate surface area	Max working pressure	A	B	C	D	E	PP	Number of plates	L2
		m ²	bar				mm				mm
FP42	DN 150 UNI PN 16	0.40	10 - 16 - 25	1470	620	941	290	225	NPx3.1	NP≤80	860
										80<NP≤130	1110
										130<NP≤220	1610
										220<NP≤300	2110
										300<NP≤500	3110
500<NP≤700	4110										
FP62	DN 150 UNI PN 16	0.60	10 - 16 - 25	1835	620	1306	290	225	NPx3.5	NP≤80	860
										80<NP≤130	1110
										130<NP≤220	1610
										220<NP≤300	2110
										300<NP≤500	3110
500<NP≤700	4110										
FP82	DN 150 UNI PN 16	0.80	10 - 16 - 25	2200	620	1671	290	225	NPx3.5	NP≤80	860
										80<NP≤130	1110
										130<NP≤220	1610
										220<NP≤300	2110
										300<NP≤500	3110
500<NP≤700	4110										
FP112	DN 150 UNI PN 16	1.15	10 - 16 - 25	2687	620	2157	290	225	NPx3.5	NP≤80	860
										80<NP≤130	1110
										130<NP≤220	1610
										220<NP≤300	2110
										300<NP≤500	3110
500<NP≤700	4110										

Scambiatori di calore a piastre ispezionabili

Gasketed plate heat exchangers

FP405/FP70/FP100/FP130

Scambiatori a piastre ispezionabili con attacco flangiato DN200
Gasketed plate heat exchangers with flanged fitting DN200



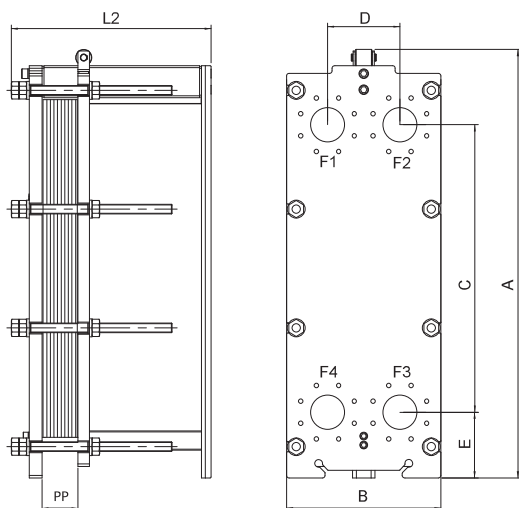
Modello	Diametro connessioni	Superficie piastra	Pressione massima di esercizio	A	B	C	D	E	PP	Numero di piastre	L2
Model	Coupling diameter	Plate surface area	Max working pressure	A	B	C	D	E	PP	Number of plates	L2
		m ²	bar	mm							mm
FP405	DN 200 UNI PN 16	0,41	10 - 16 - 25	1380	760	770	395	285	NPx3,1	NP ≤ 150	1110
										150 < NP ≤ 250	1610
										250 < NP ≤ 350	2110
										350 < NP ≤ 450	2610
										450 < NP ≤ 550	3110
550 < NP ≤ 750	4110										
FP70	DN 200 UNI PN 16	0,70	10 - 16 - 25	1740	760	1130	395	285	NPx3,1	NP ≤ 150	1110
										150 < NP ≤ 250	1610
										250 < NP ≤ 350	2110
										350 < NP ≤ 450	2610
										450 < NP ≤ 550	3110
550 < NP ≤ 750	4110										
FP100	DN 200 UNI PN 16	1,00	10 - 16 - 25	2100	760	1490	395	285	NPx3,1	NP ≤ 150	1110
										150 < NP ≤ 250	1610
										250 < NP ≤ 350	2110
										350 < NP ≤ 450	2610
										450 < NP ≤ 550	3110
550 < NP ≤ 750	4110										
FP130	DN 200 UNI PN 16	1,30	10 - 16 - 25	2460	760	1850	395	285	NPx3,1	NP ≤ 150	1110
										150 < NP ≤ 250	1610
										250 < NP ≤ 350	2110
										350 < NP ≤ 450	2610
										450 < NP ≤ 550	3110
550 < NP ≤ 750	4110										

Scambiatori di calore a piastre

Gasketed plate heat exchanger

FP81/FP120/FP160/FP190

Scambiatori a piastre ispezionabili con attacco flangiato DN300
 Gasketed plate heat exchangers with flanged fitting DN300



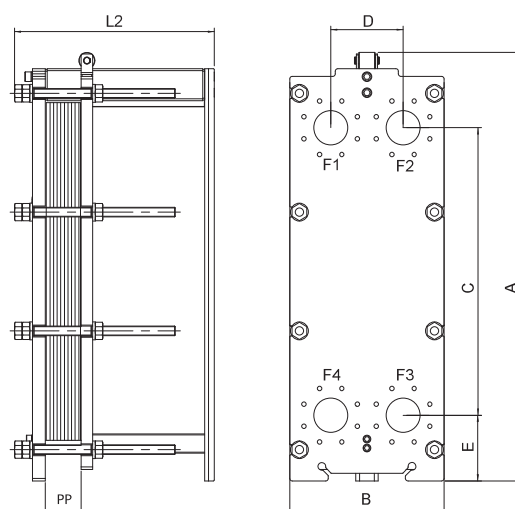
Modello	Diametro connessioni	Superficie piastra	Pressione massima di esercizio	A	B	C	D	E	PP	Numero piastre	L2
Model	Coupling diameter	Plate surface area	Max working pressure	A	B	C	D	E	PP	Number of plates	L2
		m ²	bar	mm							mm
FP81	DN 300 UNI PN 16	0,80	6 - 10 - 16 - 25	1930	980	1100	480	365	NPx3,8	NP≤201	2090
										201<NP≤301	2590
										301<NP≤401	3090
										401<NP≤501	3590
										501<NP≤601	4090
										601<NP≤701	4590
FP120	DN 300 UNI PN 16	1,20	6 - 10 - 16 - 25	2320	980	1490	480	365	NPx3,8	NP≤201	2090
										201<NP≤301	2590
										301<NP≤401	3090
										401<NP≤501	3590
										501<NP≤601	4090
										601<NP≤701	4590
FP160	DN 300 UNI PN 16	1,60	6 - 10 - 16 - 25	2710	980	1879	480	365	NPx3,8	NP≤201	2090
										201<NP≤301	2590
										301<NP≤401	3090
										401<NP≤501	3590
										501<NP≤601	4090
										601<NP≤701	4590
FP190	DN 300 UNI PN 16	1,90	6 - 10 - 16 - 25	3100	980	2267	480	365	NPx3,8	NP≤201	2090
										201<NP≤301	2590
										301<NP≤401	3090
										401<NP≤501	3590
										501<NP≤601	4090
										601<NP≤701	4590

Scambiatori di calore a piastre ispezionabili

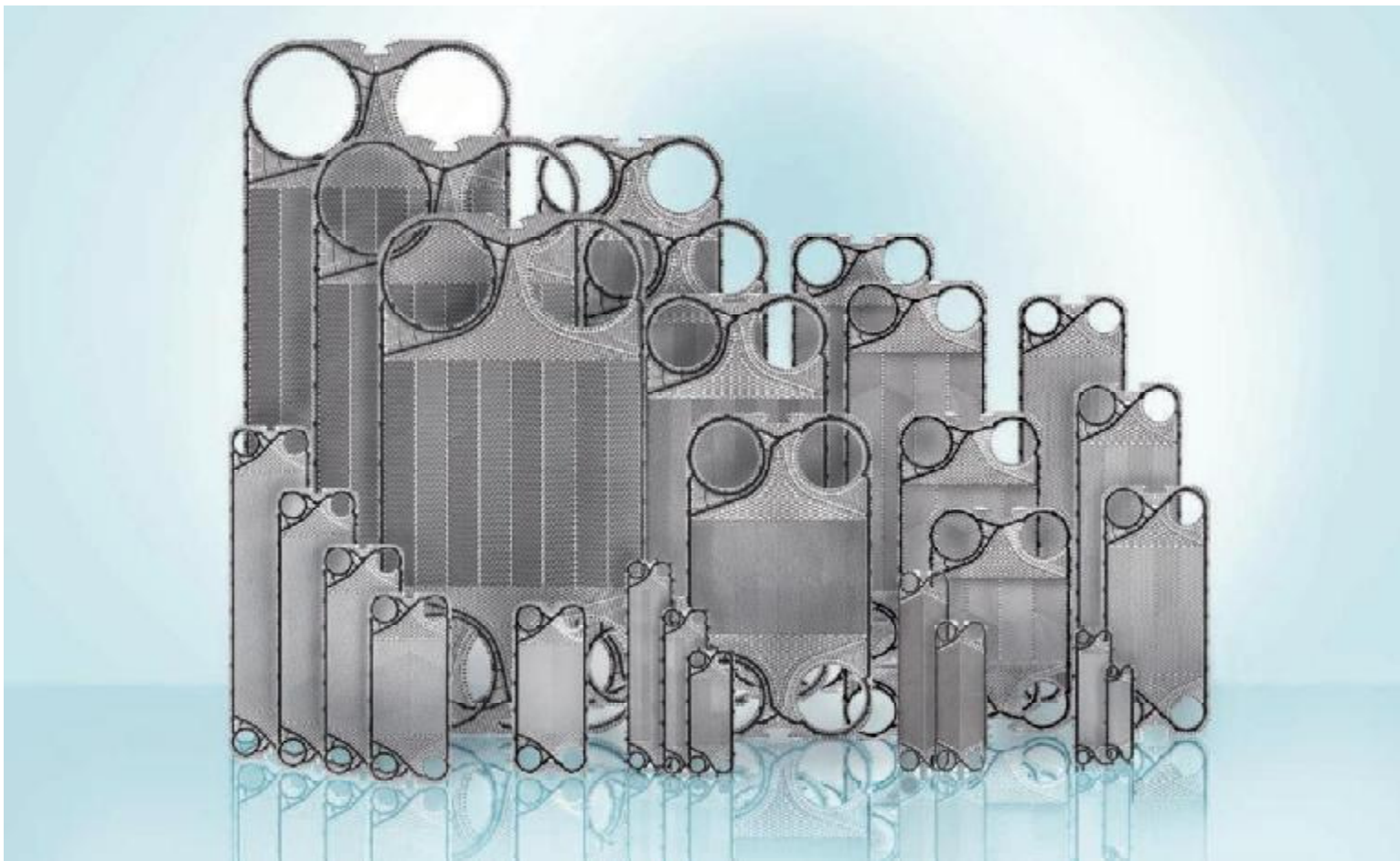
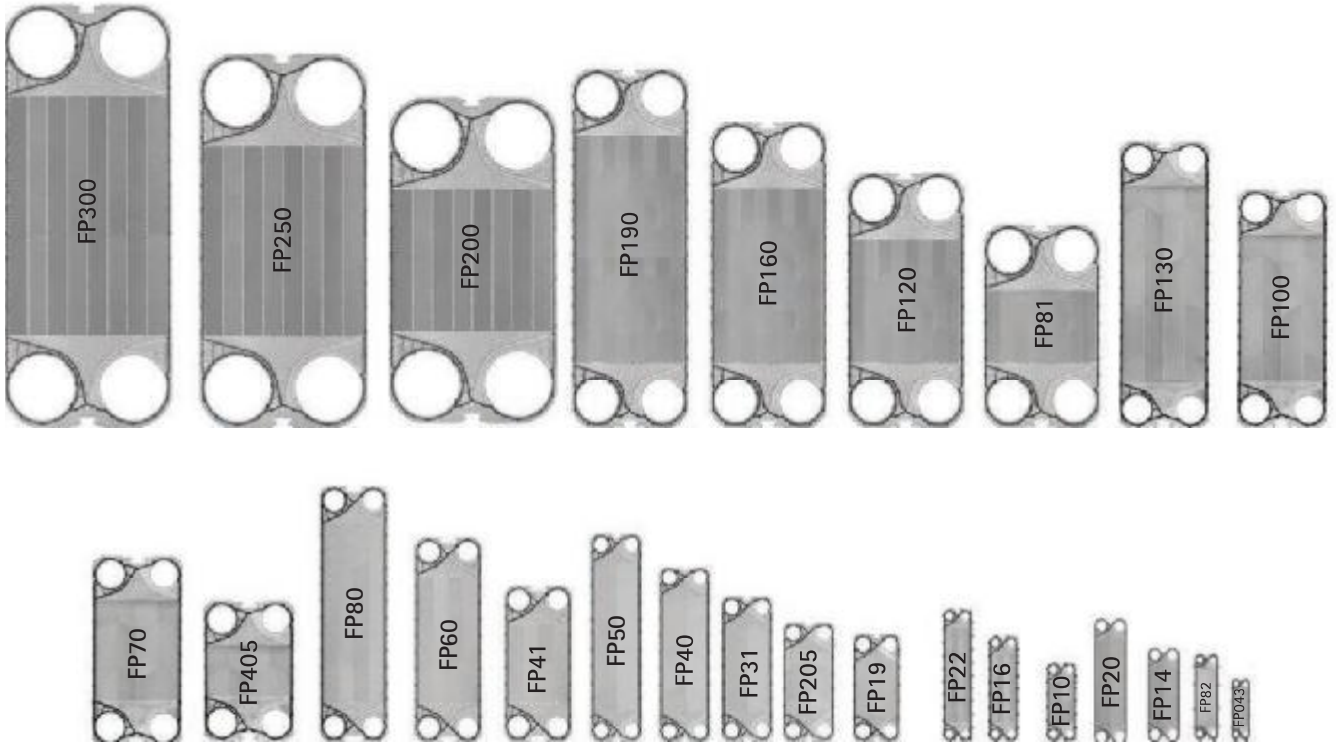
Gasketed plate heat exchangers

FP150/FP200/FP250/FP300

Scambiatori a piastre ispezionabili con attacco flangiato DN500
Gasketed plate heat exchangers with flanged fitting DN500



Modello	Diametro connessioni	Superficie piastra	Pressione massima di esercizio	A	B	C	D	E	PP	Numero di piastre	L2
Model	Coupling diameter	Plate surface area	Max working pressure	A	B	C	D	E	PP	Number of plates	L2
		m ²	bar	mm							mm
FP150	DN 500 UNI PN 16	1.50	6 - 10 - 16	2500	1370	1466	672	480	NPx4.1	NP≤201	2310
										201<NP≤301	2810
										301<NP≤401	3310
										401<NP≤501	3810
										501<NP≤601	4310
601<NP≤701	4810										
FP200	DN 500 UNI PN 16	2.00	6 - 10 - 16	2855	1370	1822	672	480	NPx4.1	NP≤201	2310
										201<NP≤301	2810
										301<NP≤401	3310
										401<NP≤501	3810
										501<NP≤601	4310
601<NP≤701	4810										
FP250	DN 500 UNI PN 16	2.50	6 - 10 - 16	3211	1370	2178	672	480	NPx4.1	NP≤201	2310
										201<NP≤301	2810
										301<NP≤401	3310
										401<NP≤501	3810
										501<NP≤601	4310
601<NP≤701	4810										
FP300	DN 500 UNI PN 16	2.50	6 - 10 - 16	3567	1370	2534	672	480	NPx4.1	NP≤201	2310
										201<NP≤301	2810
										301<NP≤401	3310
										401<NP≤501	3810
										501<NP≤601	4310
601<NP≤701	4810										





t.t.t. total transfer technology S.r.l
Sede legale: Via zampeschi 119
47122 - Forlì - ITALY
Tel. +39 0543 725714 - Fax +39 0543 794173
info@totaltransfer.it - www.totaltransfer.it